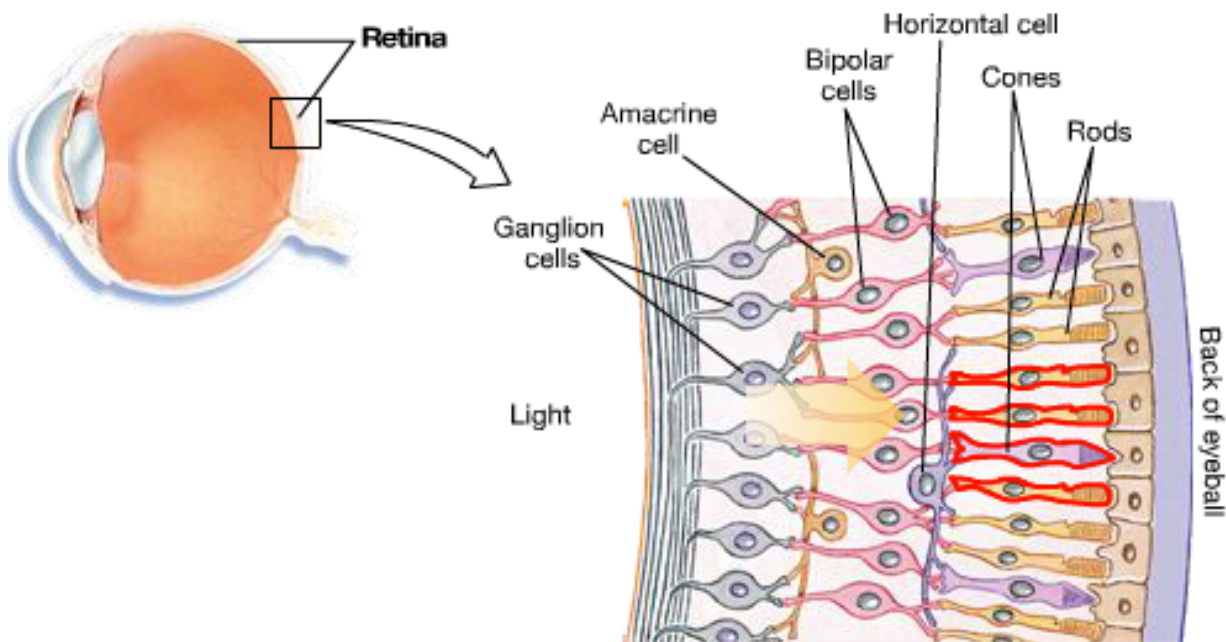


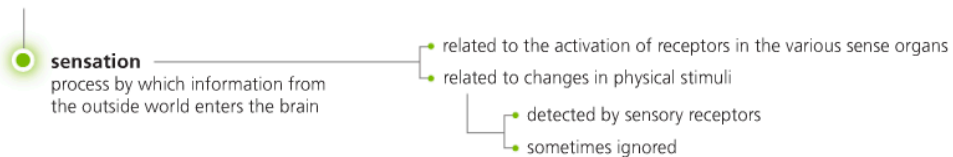
Table 3.1 Examples of Absolute Thresholds

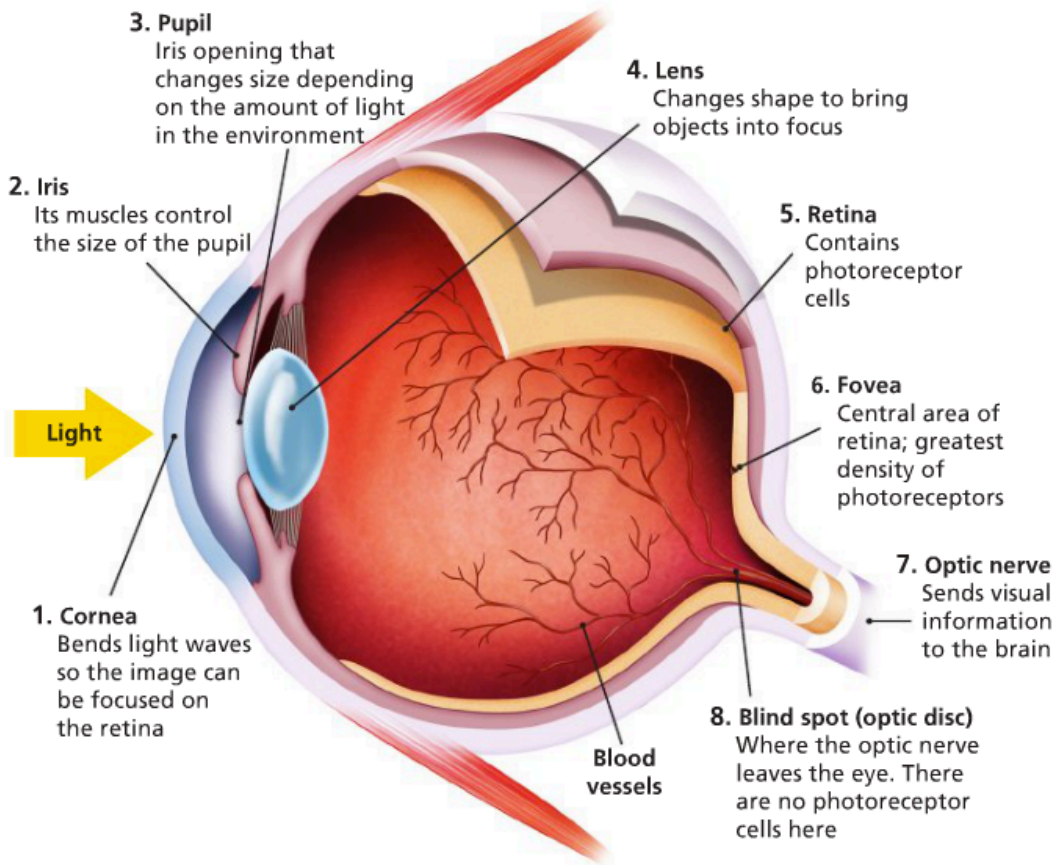
SENSE	THRESHOLD
Sight	A candle flame at 30 miles on a clear, dark night
Hearing	The tick of a watch 20 feet away in a quiet room
Smell	One drop of perfume diffused throughout a three-room apartment
Taste	1 teaspoon of sugar in 2 gallons of water
Touch	A bee's wing falling on the cheek from 1 centimeter above



3.1

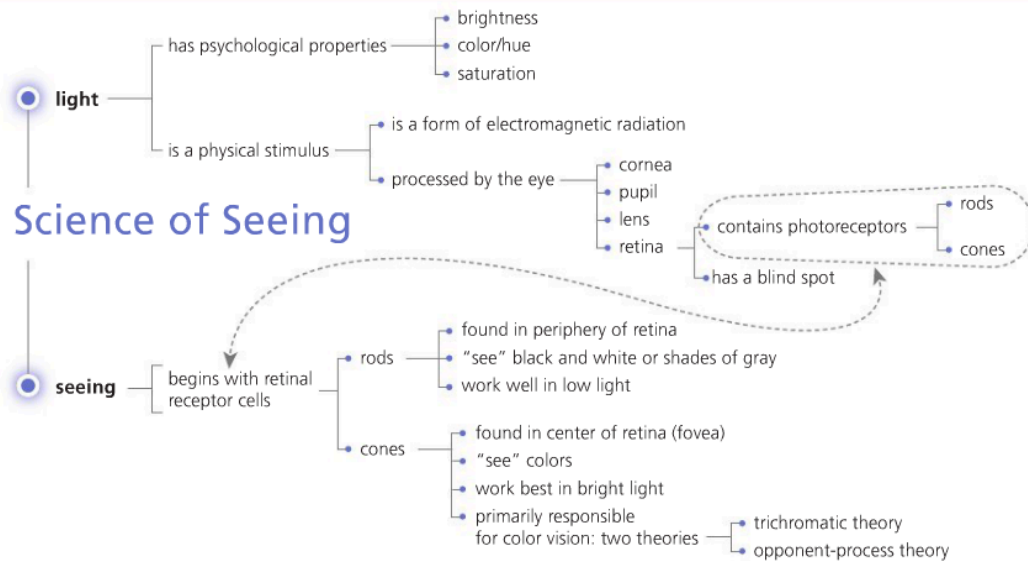
The ABCs of Sensation



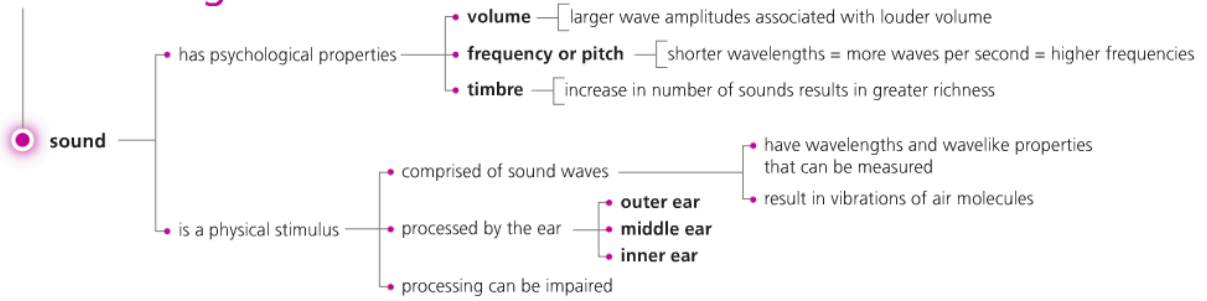


3.2-3

The Science of Seeing



The Hearing Sense



Proximity (Nearness)



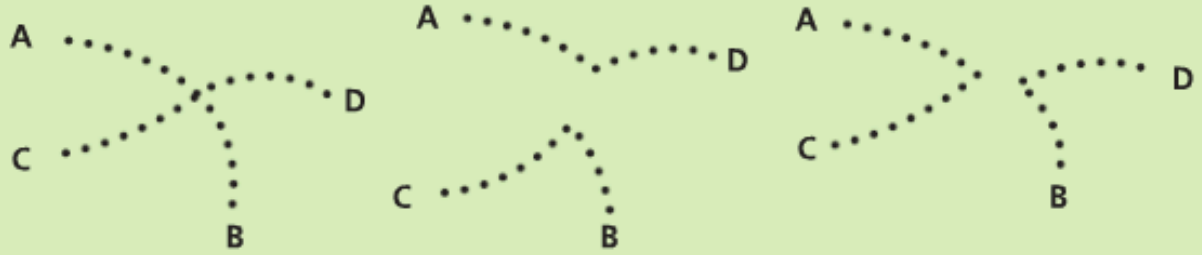
Similarity



Closure

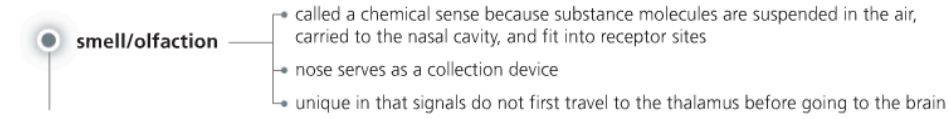


Continuity

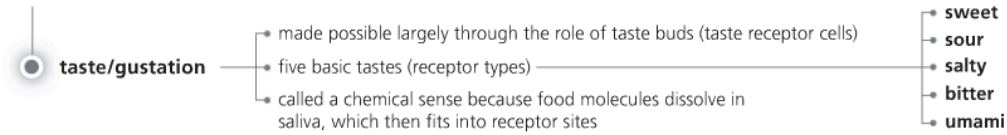


Common Region

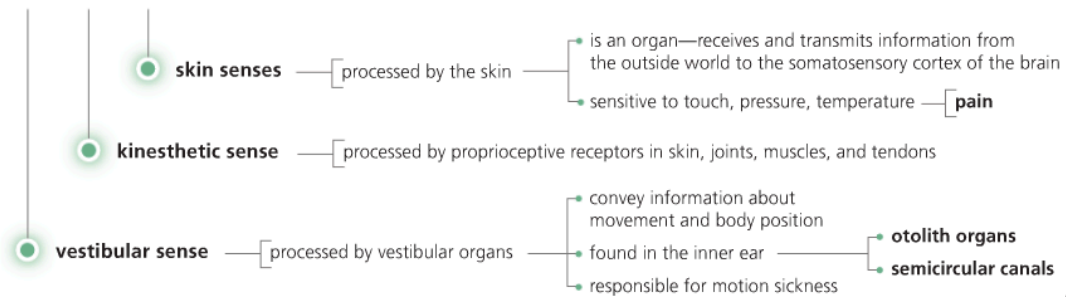




Chemical Senses



Somesthetic Senses



The ABCs of Perception

